

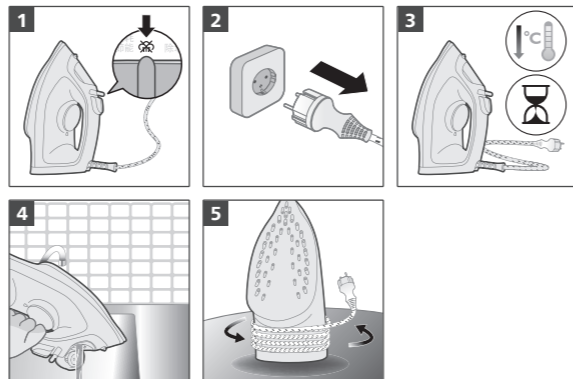
EN Welcome, Get started! TC 歡迎，馬上開始！

EN Registration and Benefits TC 註冊與權益

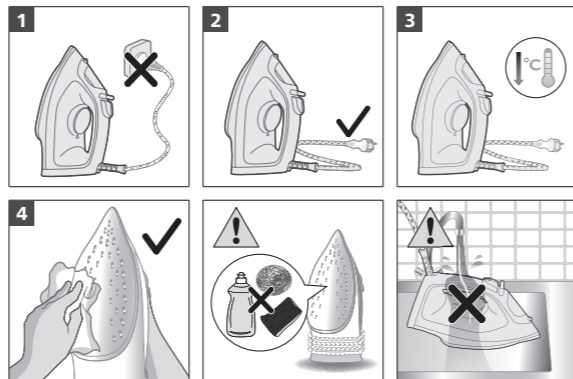
EN Digital manual TC 電子說明書

設備名稱：飛利浦蒸氣熨斗 Equipment name		型號（型式）：DST2010 Type designation (Type)				
單元 Unit	限用物質及其化學符號					
	鉛 Lead (Pb)	汞 Mercury (Hg)	鎘 Cadmium (Cd)	六價鉻 Hexavalent chromium (Cr ⁶⁺)	多溴聯苯 Polybrominated biphenyls (PBB)	多溴二苯醚 Polybrominated diphenyl ethers (PBDE)
電源線組	-	○	○	○	○	○
上蓋	○	○	○	○	○	○
水箱	○	○	○	○	○	○
溫度旋鈕	○	○	○	○	○	○
加熱元件	○	○	○	○	○	○
備考 1. “超出 0.1 wt %” 及 “超出 0.01 wt %” 係指限用物質之百分比含量超出百分比含量基準值。 Note 1: “Exceeding 0.1 wt %” and “exceeding 0.01 wt %” indicate that the percentage content of the restricted substance exceeds the reference percentage value of presence condition.						
備考 2. “○” 係指該項限用物質之百分比含量未超出百分比含量基準值。 Note 2: “○” indicates that the percentage content of the restricted substance does not exceed the percentage of reference value of presence.						
備考 3. “-” 係指該項限用物質為排除項目。 Note 3: Then “-” indicates that the restricted substance corresponds to the exemption.						

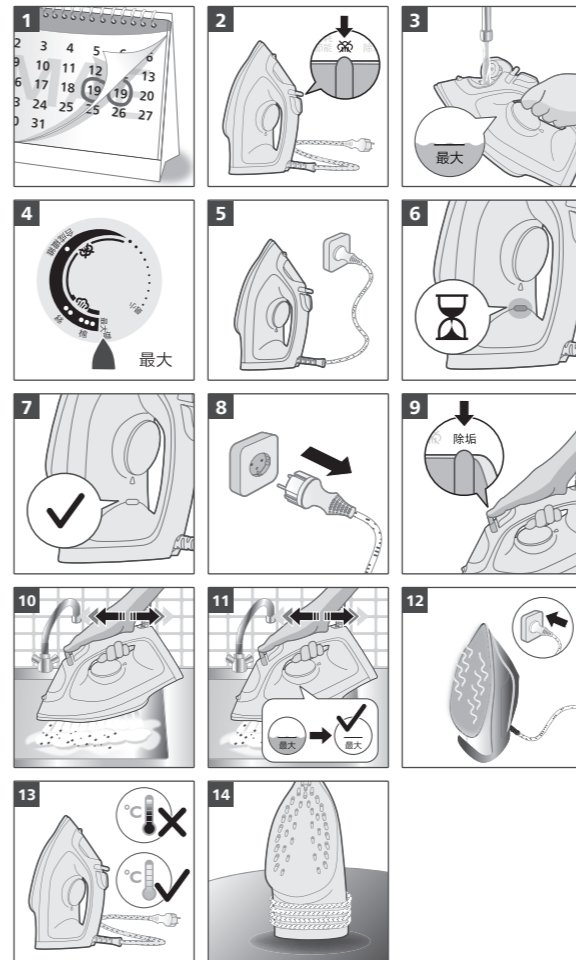
5



6



7



PHILIPS

DST2010, DST2020,
DST2030



Welcome,
Get started!



home.id/welcome

Registration
and Benefits

Digital manual



100%

www.home.id

