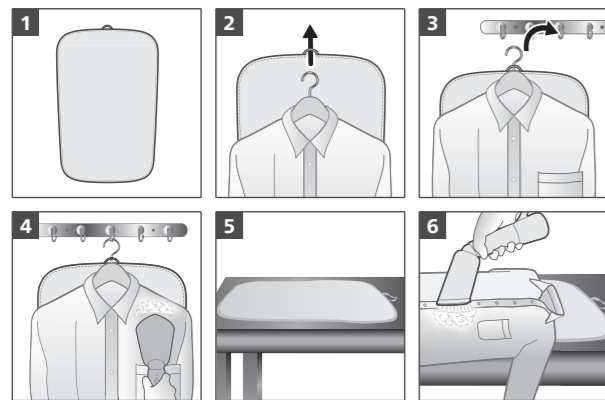


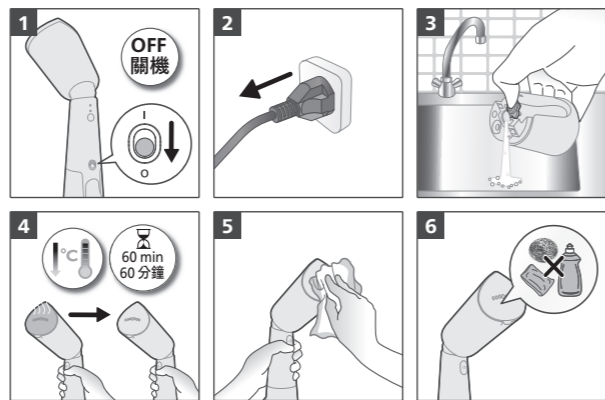
9



STH5030



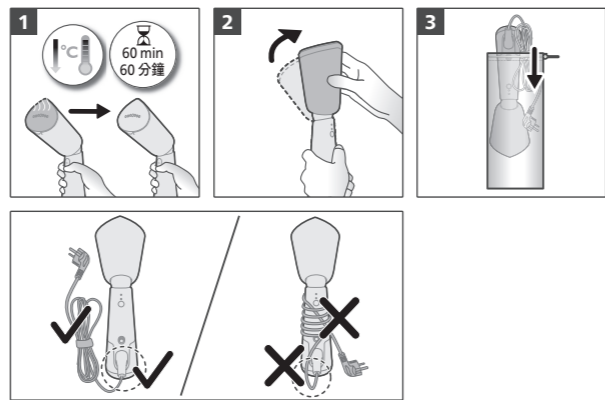
10



11



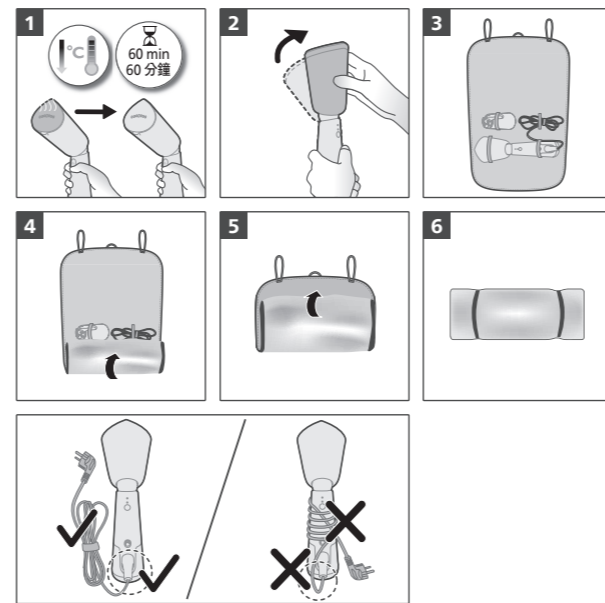
STH5010



12



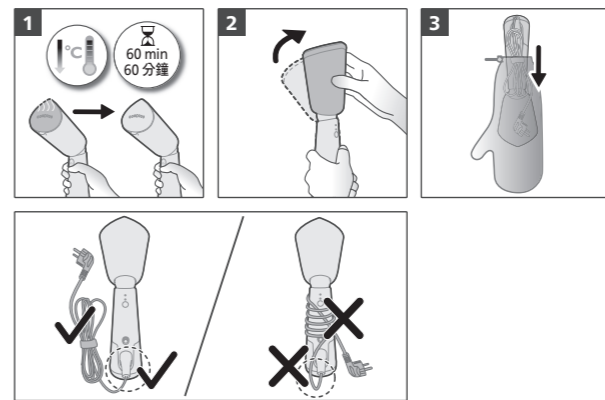
STH5030



13



STH5020
STH5030



PHILIPS

STH5000 series

STH5010, STH5020
STH5030



Welcome,
Get started!

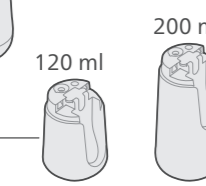
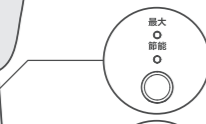
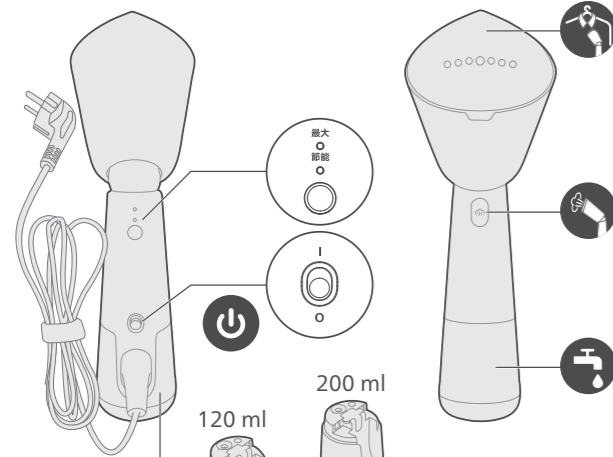


home.id/welcome

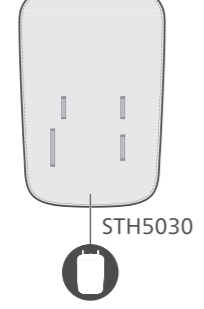
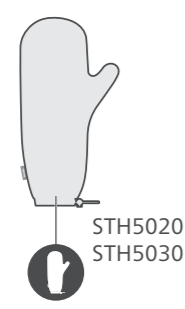
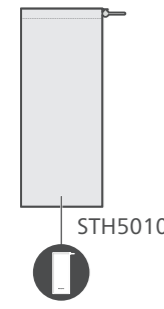
Registration
and Benefits

Digital manual

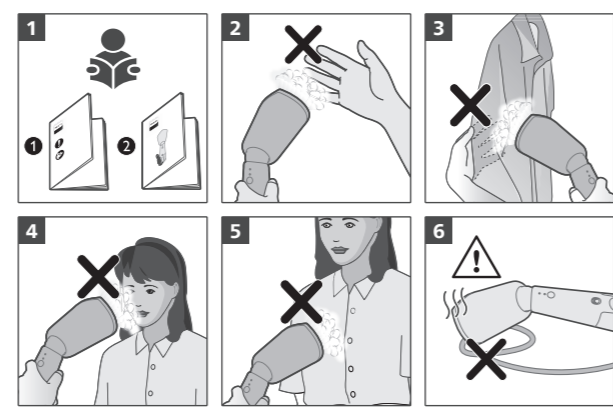
1



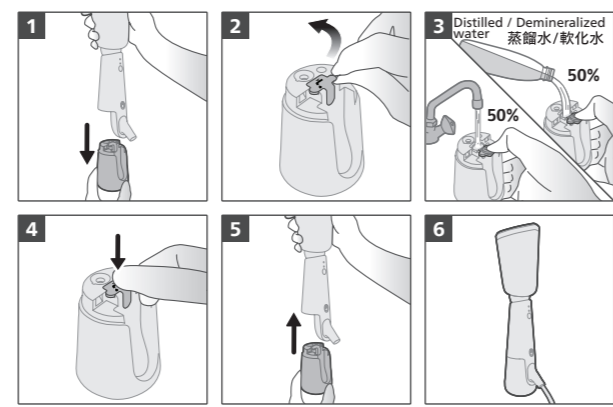
STH5010
STH5020
STH5030



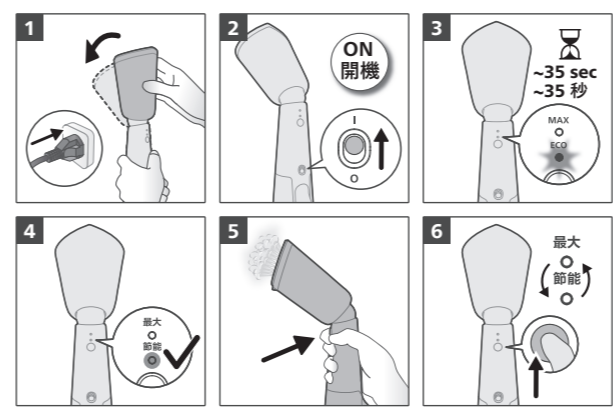
2



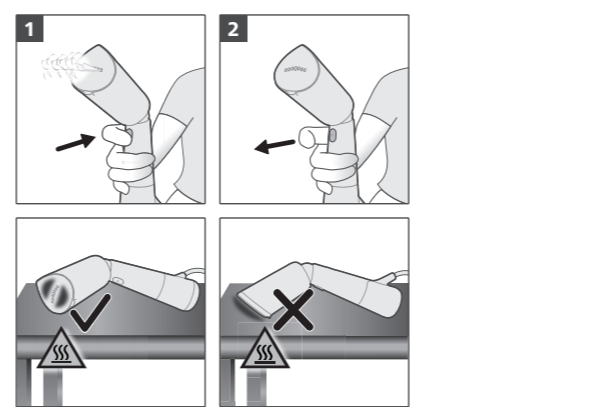
3



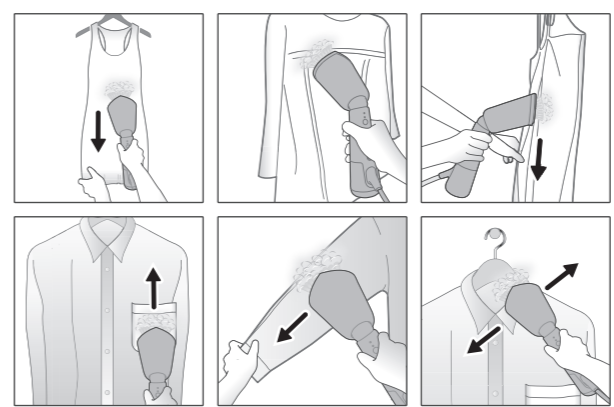
4



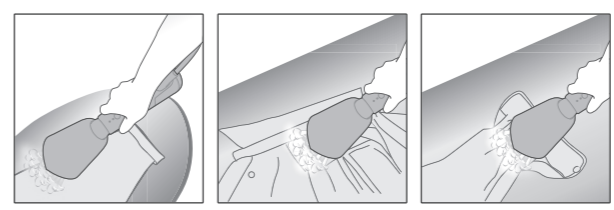
5



6



7



8



STH5020
STH5030

EN Welcome, Get started! TC 歡迎，馬上開始！

EN Registration and Benefits TC 註冊與權益

EN Digital manual TC 電子說明書

設備名稱：飛利浦手持式蒸汽掛燙機 Equipment name		型號（型式）：STH5030 Type designation (Type)				
單元 Unit	限用物質及其化學符號					
	鉛 Lead (Pb)	汞 Mercury (Hg)	鎘 Cadmium (Cd)	六價鉻 Hexavalent chromium (Cr ⁶⁺)	多溴聯苯 Polybrominated biphenyls (PBB)	多溴二苯醚 Polybrominated diphenyl ethers (PBDE)
電源線組	-	○	○	○	○	○
外殼塑件	○	○	○	○	○	○
水箱	○	○	○	○	○	○
開關	○	○	○	○	○	○
電磁泵	○	○	○	○	○	○
電器部件	○	○	○	○	○	○
加熱元件	○	○	○	○	○	○

備考 1. “超出 0.1 wt %” 及 “超出 0.01 wt %” 係指限用物質之百分比含量超出百分比含量基準值。
Note 1: “Exceeding 0.1 wt %” and “exceeding 0.01 wt %” indicate that the percentage content of the restricted substance exceeds the reference percentage value of presence condition.
備考 2. “○” 係指該項限用物質之百分比含量未超出百分比含量基準值。
Note 2: “○” indicates that the percentage content of the restricted substance does not exceed the percentage of reference value of presence.
備考 3. “-” 係指該項限用物質為排除項目。
Note 3: Then “-” indicates that the restricted substance corresponds to the exemption.

PHILIPS and the Philips Shield Emblem are registered trademarks of Koninklijke Philips N.V. and are used under license.
This product has been manufactured by and is sold under the responsibility of Versuni Holding B.V., and Versuni Holding B.V. is the warrantor in relation to this product.
2024 © Versuni Holding B.V.
642001013161 (10/07/2024)

